

VAPURE

SALT AND MINERAL CHLORINATOR

SIMPLY RELIABLE

SALT OR MINERAL SALT COMPATIBLE

MULTI-FUNCTION MENU SYSTEM

EASY TO USE TOUCH PAD

EFFICIENT CHLORINE
PRODUCTION

ULTRA LONG LIFE
SELF-CLEANING CELL

FULLY AUTOMATED

SIMPLE SET UP AND
OPERATION

QUICK CONNECT CELL

HORIZONTAL OR VERTICAL
INSTALL OPTION WITH
CELL HOUSING

VARIABLE SPEED PUMP COMPATIBLE

SMART TEMPERATURE SENSORS
(POWER SUPPLY & WATER)

EASY INSTALLATION TO NEW OR
EXISTING POOLS

SMART INTERFACE CONNECTION
TO:

- PH LOGIX CONTROLLER
- HEAT PUMP SIGNAL TO TURN
PUMP ON
- FLOW SWITCH



4 YEARS*
FULL WARRANTY
OR 10,000 OPERATING HOURS

*Domestic and Commercial installations, whichever comes first.

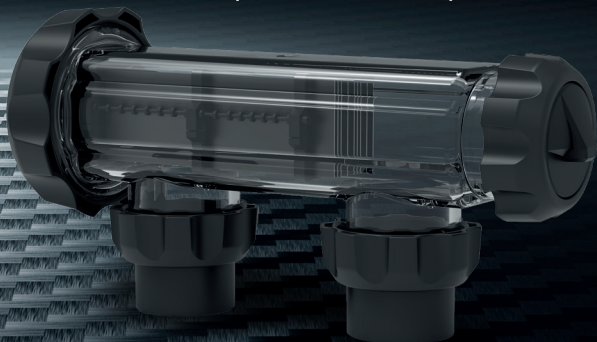
CAS | **CRYSTAL**
AQUATIC SYSTEMS

VAPURE

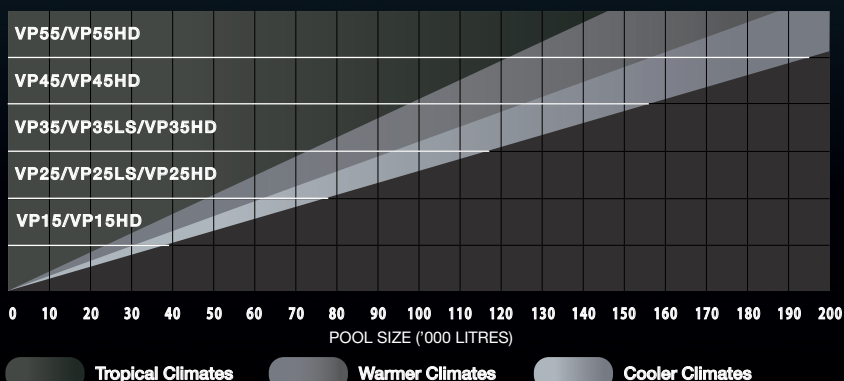
SALT AND MINERAL CHLORINATOR

FEATURES

- **LOW SALT OPERATION: 3500PPM (0.35%) WITH BUILT IN REGULATOR FOR HIGH SALT**
- **FRESHWATER/ULTRA LOW SALT: 1500PPM (0.15%) OPTION AVAILABLE IN VP25LS & VP35LS MODEL**
- **BACKLIT LCD INTERFACE DISPLAYING DETAILED OPERATOR INSTRUCTIONS CLEARLY**
- **SMART SELF-CLEANING CELL ELECTRODE**
- **PREMIUM GRADE QUICK CONNECT TITANIUM CELL FOR INCREASED LIFESPAN**
- **BACKWASH, SUPER CHLORINATE AND WINTER MODE FUNCTIONS**
- **SINGLE OR DUAL TIMER CYCLES**
- **BUILT IN SALT/TDS TEST, WATER FLOW AND TEMPERATURE PROTECTION**
- **AUTOMATIC BATTERY BACK-UP TIMER**
- **MODERN, SLIM LOOKING POWER PACK**
- **SUITABLE FOR ALL POOL SURFACES (CONCRETE, FIBREGLASS, VINYL &**



CHLORINATOR SIZING CHART



Sizing Chart provided as a guide only. Consult your Local CAS dealer for the correct systems, size and specification to suit your needs.

CHLORINE PRODUCTION

Model	Per Hour			Over 8 hours		
	Chlorine Output	Cal.hypo Equivalent (65%)	Sod.hypo. Equivalent (12.5%)	Chlorine Output	Cal.hypo Equivalent (65%)	Sod.hypo. Equivalent (12.5%)
VP15/VP15HD	15g	23g	120ml	120g	184g	960ml
VP25/VP25HD	25g	38g	200ml	200g	304g	1600ml
VP25LS	25g	38g	200ml	200g	304g	1600ml
VP35/35HD	35g	54g	280ml	280g	432g	2240ml
VP35LS	35g	54g	280ml	280g	432g	2240ml
VP45/VP45HD	45g	69g	360ml	360g	552g	2880ml
VP55	55g	85g	440ml	440g	680g	3520ml

SPECIFICATION TABLE

Model	VOLTS (Vac) Input	AMPS* (Aac) Input	Power Consumption (Watts)	VOLTS* (Vdc) Output	AMPS* (Adc) Output	Frequency (Hz)	Weight (kg)	Dimensions (cm)
VP15/VP15HD	210 - 265	0.86	204.7	7.57	15.0	50/60	9.7	41L x 35W x 19H
VP25/VP25HD	210 - 265	1.25	293.0	7.38	25.0	50/60	11.1	41L x 35W x 19H
VP25LS	210 - 265	1.25	293.0	7.38	25.0	50/60	11.1	41L x 35W x 19H
VP35/VP35HD	210 - 265	1.06	244.9	8.02	17.5	50/60	12.8	41L x 35W x 19H
VP35LS	210 - 265	1.06	244.9	8.02	17.5	50/60	12.8	41L x 35W x 19H
VP45/VP45HD	210 - 265	1.30	292.2	7.98	22.5	50/60	13.5	41L x 35W x 19H
VP55/VP55HD	210 - 265	1.78	413.0	8.73	27.5	50/60	14.2	41L x 35W x 19H

Optional Extra: 15 000hr Heavy Duty Anode. Use HD on end of model number and specify when ordering.

CAS | **CRYSTAL**
AQUATIC SYSTEMS

7 City Link Drive Carrara Queensland, 4227
Ph: +61 7 5522 9763 Email: info@crystalas.com

www.crystalas.com

©2022 CAS | Crystal Aquatic Systems. All rights reserved. Unauthorised reproduction is prohibited by law. While every effort is made in maintaining the accuracy of the information contained in this catalogue, the same information is subject to change either by circumstances out of our control or at the discretion of management without further notice.

Your Local Agent